



Safety presentation - Gate instruction (general)

Safety presentation Ovet B.V.

2

- Ovet B.V. general information
- Risks
On the terrain and on board of ships



Ovet B.V. general information

3

1. Ovet B.V.
2. Terminals Ovet B.V.
3. Activities Ovet B.V.
4. Equipment
5. Size of equipment
6. Mandatory routes
7. Environmental regulations
8. Don't's
9. Laws and regulations: ISPS
10. Camera surveillance



1. OVET

4

- Storage and transshipping of solid fuels (coal and cokes), iron ore and biomass
- Storage and transshipping on the terminals in Terneuzen and Vlissingen (place to unload, storage yard and place to load)
- Seagoing ships are unloaded with floating cranes
- Adjustments on the terminals like screening, crushing, removal of iron, drying, bagging, etc.



2. Terminals OVET

5



Terminal Kalloothaven Vlissingen

2. Terminals OVET

6



Terminal Massagoedhaven Terneuzen

3. Activities OVET

7

Barges → re-loading/ discharging

- Sea vessels
→ re-loading/
discharging
- Drying plant
- Dust prevention
- Train loading
- Truck loading
- Screening



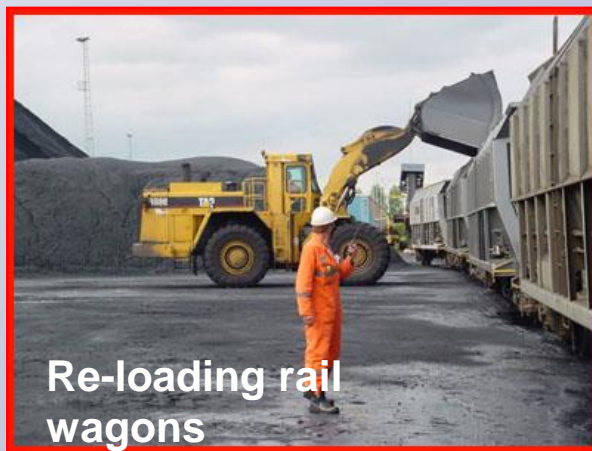
4. Equipment - activities

8



**Discharging/re-loading
sea vessel**

Floating crane



**Re-loading rail
wagons**

Wheel loader



**Discharging/
reloading barges**

Mobile shore crane



Internal transport

Loader/dumper truck



Truck loading

Wheel loader



Dust prevention

**Spray tractor/ water
trike**

5. Size of equipment

9



Grabs of floating crane



Wheel loader

6. Mandatory routes (1)

10

Kaloothaven Vlissingen



On the OVET terminals, communication about the presence of persons and vehicles, is essential

General road and traffic law is not applicable at our terminals

6. Mandatory routes (2)

11

Massagoedhaven Terneuzen



On the OVET terminals, communication about the presence of persons and vehicles, is essential

General road and traffic law is not applicable at our terminals

7. Environmental care (1)

12

Waste

Industrial waste must be deposited in the appropriate containers to prevent, among other things, complaints, vermin and violations



7. Environmental regulations (1)

13

- Stock piles are sprayed with water to prevent dust emissions
- As less spillage as possible during transshipments
- Avoid turning over open water during transshipments
- Keep a dump height less than 1 meter during transshipments



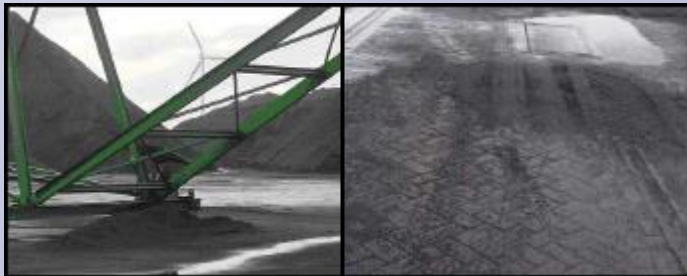
Dust control

7. Environmental regulations (2)

14

Discipline and cleanliness of workplaces

- Spilled products must be cleaned immediately.
- Wind can blow products into the water, which can cause environmental damage.



8. Don'ts!

15

- It is forbidden to use alcoholic drinks and/or have them available
- It is forbidden to use drugs and/or have them available
- It is forbidden to drive faster than **20** km/h!
- It is forbidden to smoke inside, for example in the canteen, offices, rooms, company busses and in the cabins of company vehicles
- It is forbidden to use mobile phones and sound devices during the operating of material, including driving vehicles.



Offence will result in denial of access!



9. Laws and regulations: ISPS(1)

16

International code to avoid terrorist attacks on board or with the use of seagoing vessels

According to the ISPS rules, all visitors must report and identify themselves at the terminal office!



9. ISPS port safety plan (2)

17



- Level 1: green flag: normal, “business as usual”



- Level 2: yellow flag: increased, activities under tightened supervision; access will be permitted by an external safety organisation



- Level 3: red flag: exceptional ; terminal hermetically closed and under maximum supervision

10. Camera surveillance

18

All terminals (= entry, grounds and offices) are under camera surveillance in the context of safety purposes.



Risks

on the terminal and on vessels

19

- I. Communication
- II. PPE's
- III. Fire- and explosion danger
- IV. Danger of collapsing
- V. Danger of suffocation
- VI. Safety machines, tools and other devices
- VII. Calamities
-Final.....



GEVAAR



DANGER

I. Communication

- A lot of operating assets are equipped with VHF-sets
- A lot of Ovet employees (supervisors) are provided with radios
- From the offices, communication with employees, working on the machines and present at the terminal, is possible



It is mandatory to report to OVET
when returning to the exit from the terminal or sea vessels
(Vlissingen (00)31-6-20138492 / Terneuzen (00)31-6-20138494)

II.a. Personal protection equipment

21



Gloves



Safety helmet



Safety shoes



Jacket with reflective
stripes

On OVET terminals safety clothes are mandatory!

II.b. Personal protection equipment

22



Dust mask



Safety goggle or close fitting safety goggle
with panoramic view

Mandatory in dusty environment and under dusty circumstances!

II.b. Obligation to wear a lifejacket

23



During the activities below a lifejacket is obligated:

- Towage activities (floating cranes/ fenders)
- Getting on and off the crewtender
- During change of barges
- During gauging of barges
- Within 2 meters of the quay edge (= within the quay wall top); if there is no vessel or pontoon berthed
- Within 1 meter of the pontoon's edge (up to open water)

III. Fire- and explosion danger (1)

24

What to do in case of fire at the terminal in Vlissingen?



In case of a calamity, proceed to the meeting point, indicated by the green signs, opposite of the office (direction Access World)

III. Fire- and explosion danger (2)

25

What to do in case of a fire at the terminal in Terneuzen?



In case of a calamity, proceed to the meeting point at the bicycle shed at the entrance (at the car park)

III. Fire- and explosion danger (3)

26

On board of cranes:

- During a power failure, emergency lighting will be switched on, to reach the meeting point safely, by means of the appropriate routes



III. Fire- and explosion danger (4)

27

Coal stockpiles can heat up, when moisture from water is added

As a result, the coal can begin to glow.
This is dangerous because of the heat
and it affects the quality of the coal
stock pile



Early stage of heating up is traceable by measuring with an infra-red camera

IV. Danger of collapsing

28

Breach can occur if a (sticking) stock pile (after re-loading by shovel) does not return in the natural shape, but forms an angle of 90° . This creates avalanche danger that can result in entrapment and/or suffocation.



**Stay away from
breach parties!**

V.a. Danger of suffocation

29

- Never enter the covered warehouse unaccompanied
- Measure CO (carbon monoxide) in the warehouse before entering
- Measure the CO and O₂ (oxygen) before entering hold entrances
- Measure CO and O₂ with the gas detection device



Gas detection device



V.b. Danger of suffocation

30

What to do when gas escapes from nearby chemical plants:

Gather in the canteens of buildings and floating cranes when there is a gas calamity!
(Close air supply!)



VI. Safety machines, tools and other devices

31

- a. Never walk underneath a load
- b. Limited sight of drivers on loaders
- c. Mooring wires – quay edges



VI.a. Never walk underneath a load

32

**Never walk underneath the grab of a crane,
because cargo can fall out of the grab!**

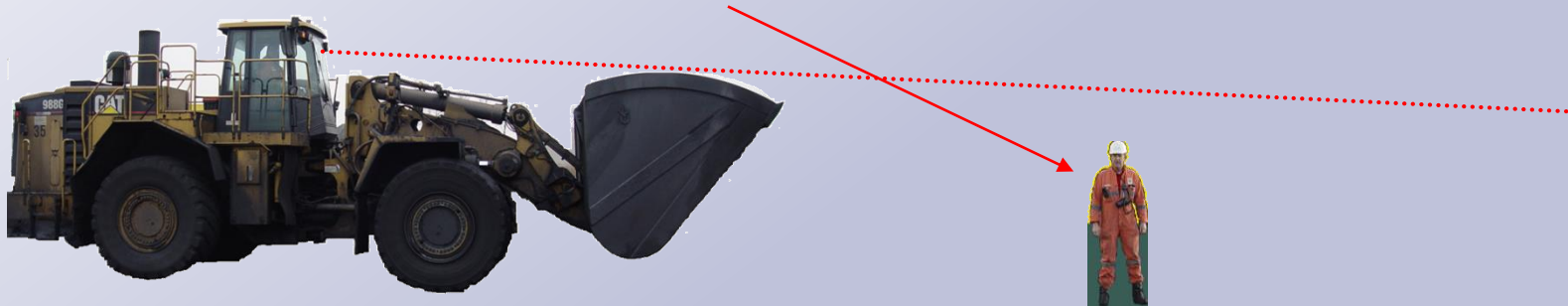


Always wait till the grab has passed, only then it is safe to walk along side the crane.

VI.b. Limited view of wheel loaders

33

Due to the limited sight you can be hit!



Point of view from the cabin!

VI.c. Mooring wires – quay edges

34



These wires can “jump off”

Therefore stay away from
mooring wires and quay
edges

VI.d. Safe use of ladders / (quayside-)steps

35

- Minimum 3 points of contact while climbing/descending a ladder
- Hands free of equipment!
- Before using a ladder, check it's condition!
- Do not use a ladder for "work at heights" if an aerial platform, scaffolding, mobile scaffold or cherry picker is available



VII. Calamities

36

1. Warn (for example by radio or by another OVET employee) the shift supervisor and/or foreman (= first responder)
2. First responder performs the first actions!
3. First responder determines whether the emergency services should be warned!
4. Defibrillators are available in the buildings and on the floating cranes
5. Strictly follow the instructions of the first responder!



Finally...

37

Reports concerning aggression, violence and intimidation can be reported to the head KAM or head P&O



End of safety presentation

38

- You can now start with the test
- ANY QUESTIONS ???

