



Safety presentation - Gate instruction (general)



OVET B.V.

Safety presentation Ovet B.V.

2

- Ovet B.V. general information
- Risks
On the terrain and on board of ships





OVET B.V.

Ovet B.V. general information

3

1. Ovet B.V.
2. Locations Ovet B.V.
3. Activities Ovet B.V.
4. Equipment
5. Size equipment
6. Mandatory terminals/walkways
7. Environmental regulations
8. Forbidden
9. Laws and regulations: ISPS
10. Camera surveillance



1. Ovet B.V.

4

- Storage and transshipping of solid fuels (coal and cokes), iron ore and biomass
- Storage and transshipping on the terminals in Terneuzen and Vlissingen (place to unload, storage yard and place to load)
- Seagoing ships are unloaded with floating cranes
- Adjustments on the terminals like screening, crushing, removal of iron, drying, bagging, etc.





OVET B.V.

2. Locations Ovet B.V.

5



Terminal Kaloothaven Vlissingen



OVET B.V.

2. Locations Ovet B.V.

6



Terminal Massagoedhaven Terneuzen

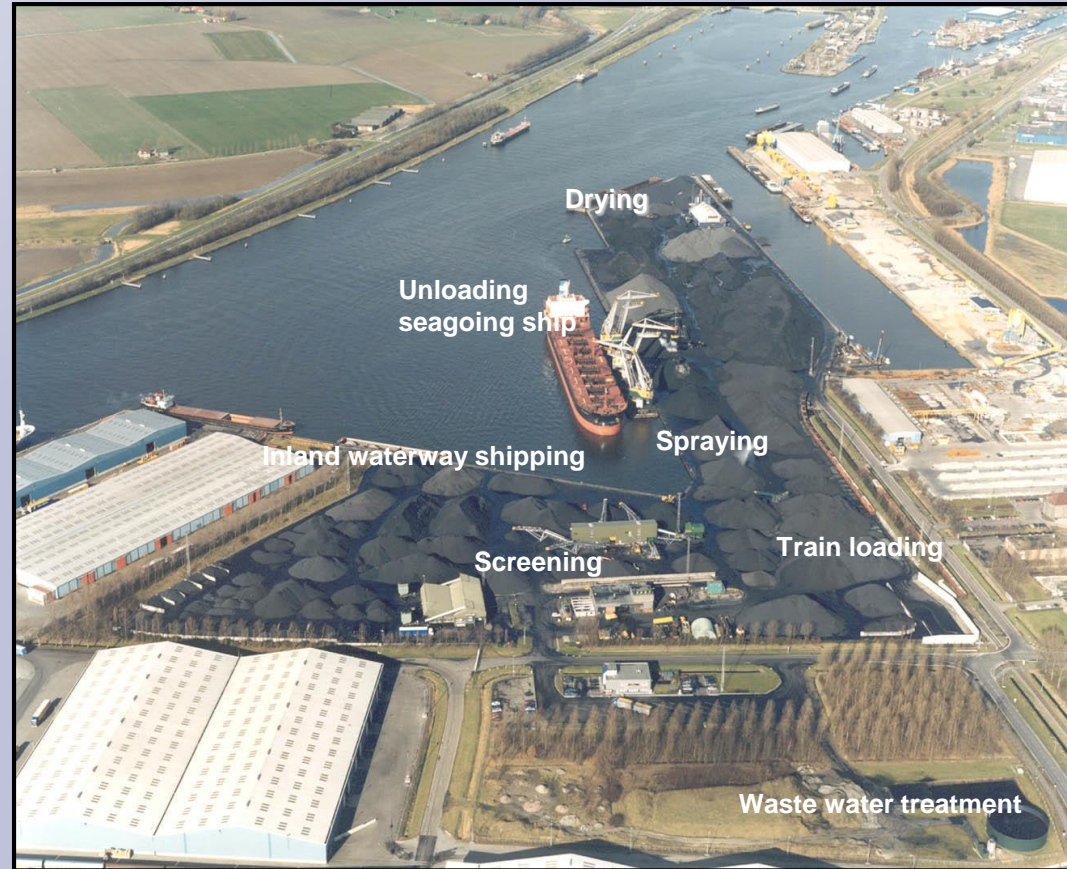


OVET B.V.

Quality in bulk

3. Activities Ovet B.V.

- Inland waterway shipping → loading/unloading
- Seafaring → loading/unloading
- The drying place
- Spraying
- Train loading
- Car loading
- Screening





OVET B.V.

4. Equipment - activities

8



Loading seagoing ship

Floating crane



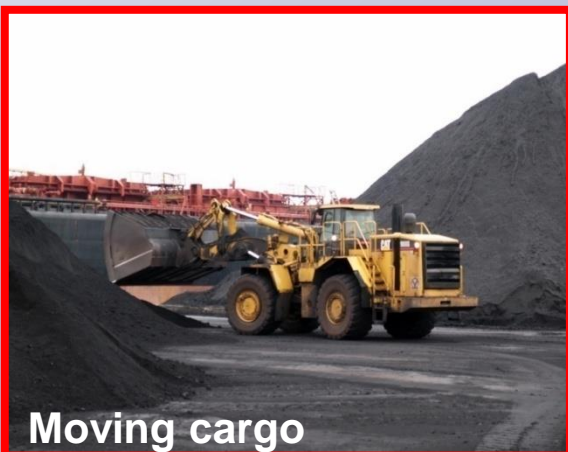
Loading railcars

Loader/dump truck



Loading inland waterway shipping

Quay crane



Moving cargo

Loader/dump truck



Truck loading

Loader



Spraying

Spray tractor/ spray car



OVET B.V.

Quality in bulk

5. Size equipment

9



**Gripper of the floating
crane**



Loader

6. Mandatory routes (1)

10

Kaloothaven Vlissingen



**Communication about persons and vehicles on Ovet's ground is essential.
The road and traffic law does not count on private property.**



OVET B.V.

Quality in bulk

6. Mandatory routes (2)

11

Massagoedhaven Terneuzen



**Communication about persons and vehicles on Ovet's ground is essential.
The road and traffic law does not count on private property.**

7. Environmental care (1)

12

Waste

Industrial waste must be deposited in the appropriate containers to prevent, among other things, complaints, pests and violations.



7. Environmental regulations (1)

13

- By keeping the parties wet, dust cannot blow away.
- Loading and unloading with spilling/blowing away as less products as possible.
- Avoid turning over open water while transshipping.
- Keep a dump height less than 1 meter while transshipping.



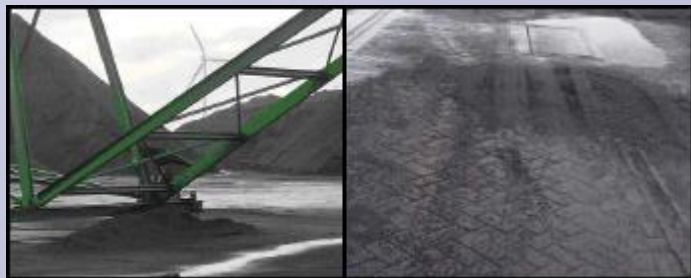
Dust control

7. Environmental regulations (2)

14

Cleanliness and order of workplaces

- Spilled products must be cleaned immediately.
- Wind can make products blow into the water, this can cause environmental damage.



8. Forbidden!

15

- It is forbidden to use alcoholic drinks and/or have them available.
- It is forbidden to use drugs and/or have them available.
- It is forbidden to drive faster than 20 km/h!
- It is forbidden to smoke inside, for example in the canteen, offices, rooms, company busses and in the cabins of company vehicles.
- It is forbidden to use mobile phones and sound devices during the operating of material, including driving vehicles.



Offence will result in denial of access!



9. Laws and regulations: ISPS(1)

International code to avoid terrorist attacks on board or with the use of seagoing ships.

The ISPS says visitors must always report and legitimate on the terminal office!



9. ISPS harbour safety plan (2)

17



- Level 1: normal, green flag; “business as usual”.



- Level 2: increased, yellow flag; activities under tightened supervision; access will be permitted by an external safety organisation.



- Level 3: exceptional, red flag; terminal hermetically closed and under maximum supervision.

10. Camera surveillance

All terminals (= entry, grounds and offices) are under camera surveillance in the context of safety purposes.





Risks

Op the grounds and on board of ships

- I. Communication
- II. PPE's
- III. Fire- and explosion danger
- IV. Danger of collapsing
- V. Danger of suffocation
- VI. Safety machines, tools and other devices
- VII. Calamities
-Final.....



I. Communication

- A lot of assets are provided with VHF-sets.
- A lot of Ovet employees (supervisors) are provided with radios.
- It is possible to communicate from the offices with employees on the machines and grounds.



It is mandatory to report to Ovet when returning from grounds or ships to the exit:

(Vlissingen (00)31-6-20138492 / Terneuzen (00)31-6-20138494)



OVET

II.a. Personal protection equipment

21



Gloves



Safety helmet



Safety shoes



Jacket with reflective stripes

On Ovet's grounds safety clothing is mandatory!



II.b. Wear duty lifejacket



During the activities below a lifejacket must be worn:

- Drag activities (cranes/fenders)
- Getting on and off the crewtender
- At the turn of barges
- During the calibration of barges
- Within 2 meters of the quay edge (= within the quaywalltop); if there is not berthed a vessel or pontoon.
- Within 1 meter of the pontoon's edge (upto open water).

III. Fire- and explosion danger (1)

What to do when there is a fire on the terminal Vlissingen?



When there is a calamity you must go to the rendezvous, recognizable by the green sign, opposite of the office (direction Kaloothaven).

III. Fire- and explosion danger (2)

What to do when there is a fire on the terminal Terneuzen?



When there is a calamity you must gather at the bicycle storage at the entry (at the carparking)

III. Fire- and explosion danger (3)

25

On board of cranes:

- To reach the rendezvous through the appropriate walkways emergency lighting will be enabled when there is a power cut.



III. Fire- and explosion danger (4)

Heating up occurs in parties coals and occurs when moisture from water is added.



The result is that the coals begin to glow. This is dangerous because of the heat and it affects the quality of the party coal.



Novice heating up is traceable by infrared measurements

IV. Danger of collapsing

27

Breach can occur if a (sticking) party coals (after taking away) does not return in the natural shape, but forms and angle of 90° . This creates avalanche danger that can result in entrapment and/or suffocation.



**Stay away from
breach parties!**

V.a. Danger of suffocation

28

- Never enter the storage shed without accompaniment
- Measure te CO (carbon monoxide) in the storage shed before going inside
- Measure the CO and O₂ (oxygen) before entering hold entrances
- Measure CO and O₂ with the gas detection device



Gas detection device



V.b. Danger of suffocation

29

What to do when gas escapes from nearby chemical companies (chemical fabrics):

Gather in the canteens of buildings and floating cranes when there is a gas calamity! (close air supply)



VI. Safety machines, tools and other devices

30

- a. Never walk underneath a load
- b. Limited sight of machinists on loaders
- c. Mooring wires – quay edges



VI.a. Never walk underneath a load

Never walk underneath the gripper of a crane, because cargo can fall out of the gripper!

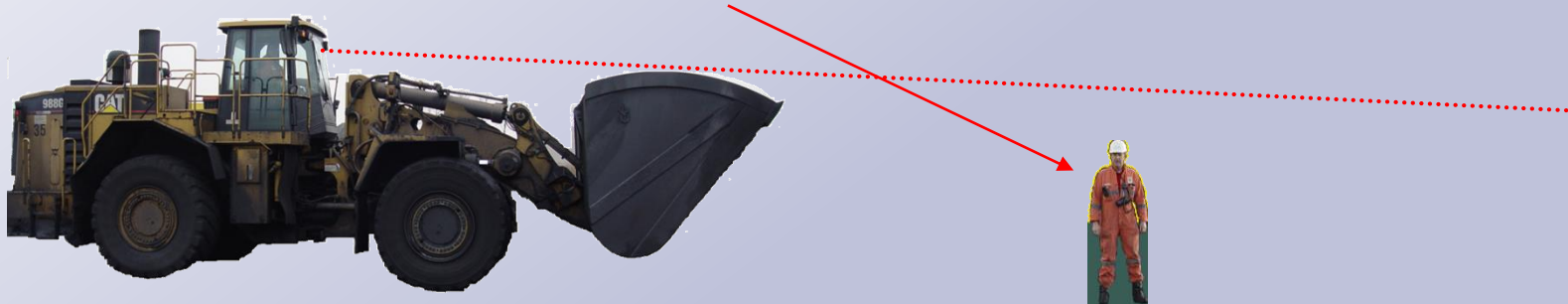


Always wait till the gripper has passed, only then you can walk along the crane.

VI.b. Limited sight loaders

32

Due to the limited sight you can be hit!



Field of view from the cabin!

VI.c. Mooring wires – quay edges

33



These wires can “jump off”
Therefore stay away from
mooring wires and quay
edges

VI.d. Safe use of ladders / (quayside-)steps

34

- Minimum 3 points of contact while climbing/descending a ladder
- Hands free of equipment!
- Before using a ladder, check it's condition!
- Do not use ladder for "work at heights" if an aerial platform, scaffolding, mobile scaffold tower or cherrypicker is available.



VII. Calamities

35

1. Warn (for example by radio or other Ovet employee) the shift supervisor and/or foreman (= first responder)
2. First responder performs the first actions!
3. First responder determines whether the emergency services should be warned!
4. Defibrillators are available in the buildings and on the floating cranes.
5. **Strictly follow the instructions of the first responder!**





Finally...

Reports in the context of aggression, violence and harassment can be reported to the head KAM or head P&O.



End safety presentation

37

- You can start with making the test
- ANY QUESTIONS ???

